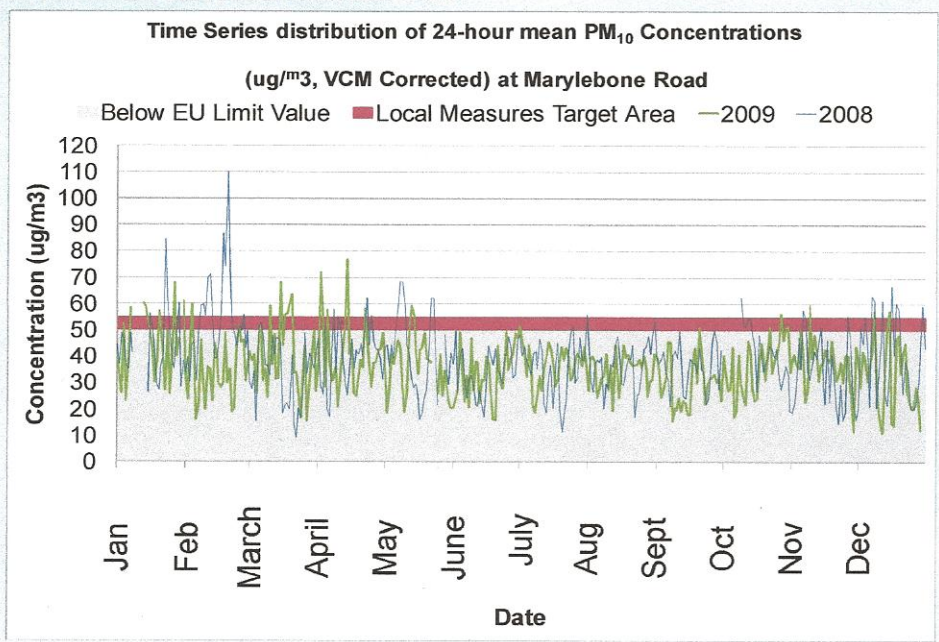


**Box 11: What can local measures do?**



Readings in the grey area are within the EU daily limit value, readings outside it are exceedences (some of which last for more than one day). The red band indicates the exceedences that need to be eliminated for the EU daily limit value to be met. This graph shows conditions in 2008 and 2009.

Around 40 per cent of central London’s PM<sub>10</sub> concentrations come from outside London, but this varies day-to-day. On some days the contribution from external sources alone is greater than the daily mean EU limit value. Clearly, in these circumstances London-based measures will not prevent exceedences of the limit values in Greater London. In this context, it is necessary that action is also taken by the Government.

However, there are other days where a location only just exceeds the EU limit value (shown by the red band). In these circumstances a reduction in local emissions or concentrations (for example, by preventing re-suspension) will help achieve compliance.